

# *Hollandia 700*

## Operating Instructions

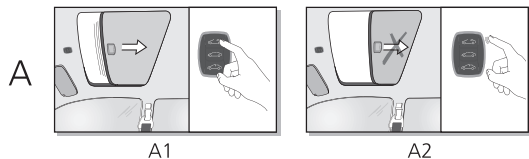


**WARNING:** Cancer and Reproductive Harm  
[www.P65Warnings.ca.gov](http://www.P65Warnings.ca.gov)

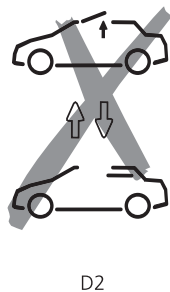
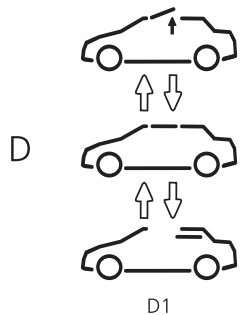
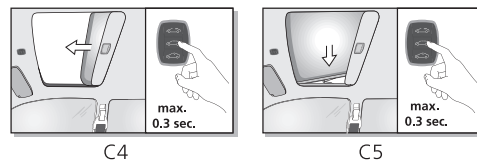
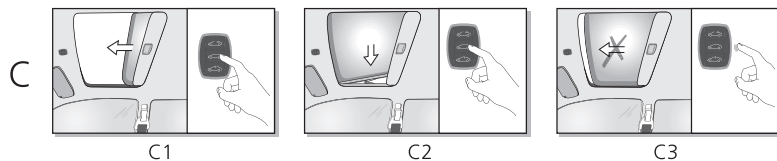
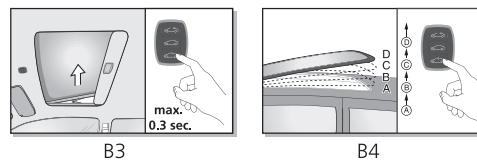
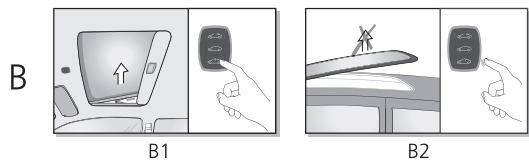
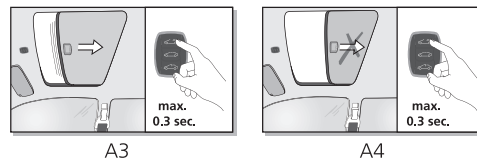




## ENTRY & COMFORT



## COMFORT



Dear Customer,

Webasto Thermo & Comfort North America, Inc. would like to thank you for purchasing a Hollandia 700 Series sunroof. This new generation sunroof is available in 2 grades, ENTRY and COMFORT.

Below you will find everything you need to know about this Hollandia 700 Series tilting and sliding sunroof. In order to achieve maximum sunroof functionality, please read through these instructions carefully. Happy motoring!

## SWITCH

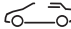
The sunroof can be operated by a 3 button switch with self explanatory symbols. You can either tilt, slide or close the glass panel.

The switch for an ENTRY sunroof is solid black. The COMFORT switch is available in 3 colors (black, beige and gray), has LED illumination and a metal colored edge.

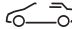
## OPERATION

Ensure that your vehicle ignition is switched ON.


### SLIDE OPEN (Entry version and Comfort version)

By continuously pressing the button  the glass panel will move in the OPEN direction (fig. A1). The movement of the panel continues as long as the button is pressed. The panel stops when the button is released (fig. A2) or the FULL SLIDE OPEN position is reached.


### ONE TOUCH SLIDE OPEN (Comfort version only)

By pressing the button  briefly (max. 0.3 seconds) the glass panel will move automatically towards the FULL SLIDE OPEN position (fig. A3). The panel stops when any of the buttons are pressed (fig. A4) or when the FULL SLIDE OPEN position is reached.


### TILT (Entry version only)

By continuously pressing the button  the glass panel will move in the TILT direction (fig. B1). The movement of the panel continues as long as the button is pressed. The panel stops when the button is released (fig. B2) or the FULL TILT position is reached.

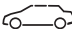
### ONE TOUCH TILT (Comfort version only)

By pressing the button  briefly (max. 0.3 seconds) the glass panel will move automatically towards FULL TILT position (fig. B3). The panel stops when any of the buttons are pressed or when the FULL TILT position is reached.


### 4 STEPS TILT (Comfort version only)

By continuously pressing the button  the glass panel will move in the TILT direction in 4 steps (fig. B4). The 4 step function allows the user to find the most comfortable tilt position easily. The movement of the panel continues as long as the button is pressed. The panel stops when the button is released or the FULL TILT position is reached.

### CLOSE (Entry and Comfort version)


By continuously pressing the button  the glass panel will move towards CLOSE position (fig. C1 and C2). The movement of the panel continues as long as the button is pressed. The panel stops when the button is released (fig. C3) or the FULL CLOSE position is reached.

### ONE TOUCH CLOSE (Comfort version only)

By pressing the button  briefly (max. 0.3 seconds) the glass panel will move automatically towards the FULL CLOSE position (fig. C4 and C5). The panel stops when any of the buttons are pressed or when the FULL CLOSE position is reached.

## NOTE

It is NOT possible to select TILT from SLIDE position directly and vice versa (fig. D2). In that case the glass panel will not move.

**You should always press the button  (CLOSE) first** (fig. D1).

## ADDITIONAL FEATURES

### ANTI-PINCH PROTECTION (Safety Feature)

#### Entry version:

Should the glass panel encounter an obstacle while closing from SLIDE position, it automatically stops.

#### Comfort version:

The anti-pinch protection becomes active when the sunroof is closed either by CLOSE, ONE TOUCH CLOSE or AUTO-CLOSE.

Should the glass panel encounter an obstacle while closing, it automatically opens again.

### AUTO-CLOSE (Comfort version only)

When turning off your vehicles ignition, the AUTO-CLOSE will be activated. After three seconds the sunroof will close automatically. This counts only when the glass panel is in SLIDE position. In case the panel is in TILT position, it will remain open to keep the ventilation function.

Should you require the sunroof to stop, while closing, press any of the buttons briefly. You can also prevent the panel from closing by pressing any of the buttons within the three second interval.

When you switch the ignition on, the sunroof can be operated in the normal manner.

### ILLUMINATION (Comfort version only)

The switch is equipped with 4 color LEDs (white, green, blue and red) to allow for the best match with the factory set instrumentation coloring. The default color setting is white. If not already done you can ask your installer to change the color.

### WIND DEFLECTOR (Comfort version only)

In order to reduce wind noise and buffeting the sunroof is equipped with a wind deflector. The wind deflector will automatically pop up in SLIDE position.

### SUNSHADE

Sunshade operation depends on glass panel movement. By moving the panel to TILT position, the sunshade automatically opens slightly to allow for some airflow. If desired it can be opened further manually. By moving the panel to SLIDE position, the sunshade will move simultaneously, but can also be opened further manually. Closing the sunshade always has to be done manually. The sunshade can only be closed completely when the panel is in FULL CLOSE position.

## MAINTENANCE

Generally, no maintenance is required.

### GLASS PANEL

To clean the glass panel use only a mild, non-scratching detergent and a brush or sponge. When starting your journey you are advised not to open the sunroof during the first few minutes if there is moisture on the panel. Webasto recommends first driving with the sunroof closed until all moisture has evaporated.

## WARRANTY

Webasto Thermo & Comfort North America, Inc. warrants to the original purchaser, a lifetime warranty on all component parts of the Hollandia 700 series sunroofs against defective materials or workmanship when serviced by Webasto Thermo & Comfort North America, Inc. personnel, or a Webasto Authorized Installer.

Proof of original purchase and date of installation are required to receive warranty service.

The warranty applies only when the sunroof has been installed in accordance with Webasto Thermo & Comfort North America, Inc. installation instructions. Defects caused by rough handling, incorrect use, accident and broken glass are not covered by this warranty. Transportation costs are the responsibility of the owner.

Labor costs for installation or service are not covered under this warranty and should not be assumed unless the installer provides a separate written warranty.

All obligations of Webasto Thermo & Comfort North America, Inc. under this warranty shall be terminated if:

- Service is performed by someone other than Webasto Thermo & Comfort North America, Inc. personnel, or a Webasto Authorized Installer.
- The product is modified or altered in a way not approved by Webasto Thermo & Comfort North America, Inc.
- The owner cannot produce evidence of original purchase, and installation date.

WEBASTO THERMO & COMFORT NORTH AMERICA, INC. MAKES NO OTHER WARRANTY OF ANY KIND WHATEVER, EXPRESS OR IMPLIED; AND ALL IMPLIED WARRANTIES OF MERCHANTABILITY AND FITNESS FOR A PARTICULAR PURPOSE WHICH EXCEEDS THE ABOVE STATED OBLIGATIONS ARE DISCLAIMED BY WEBASTO THERMO & COMFORT NORTH AMERICA, INC. AND EXCLUDED FROM THIS AGREEMENT.



In multilingual versions the English language is binding.  
The telephone number of each country can be found in the Webasto service center leaflet or the website of the respective Webasto representative of your country.

Webasto Thermo & Comfort N.A., Inc.  
15083 North Road  
Fenton, MI 48430

Phone: (800) 860-7866  
Email: [info-us@webasto.com](mailto:info-us@webasto.com)

[www.webasto.com](http://www.webasto.com)