

## **Spare Part List**

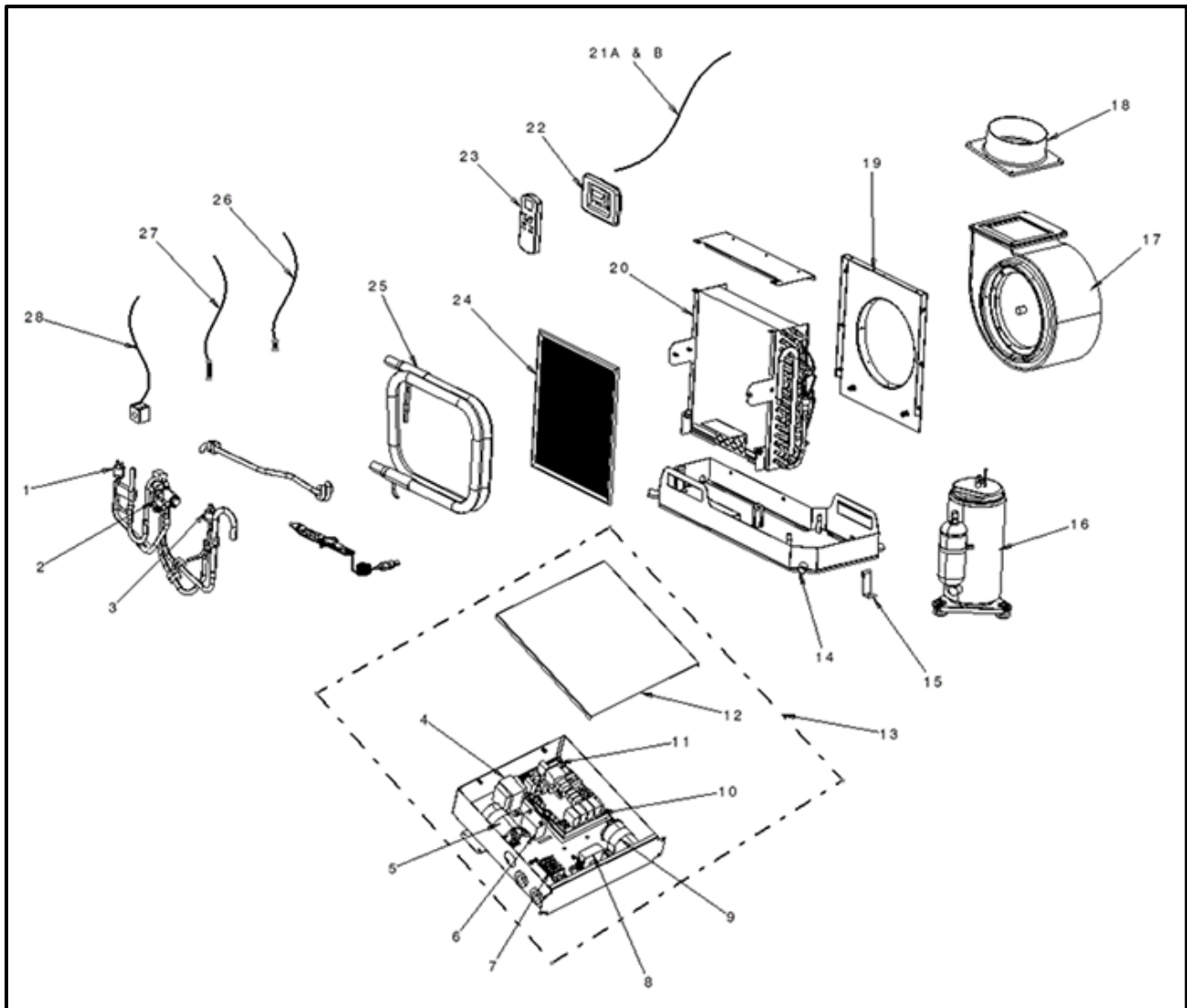
Marine

FCF Platinum Series - 115V (60Hz) | 230V (50/60Hz)

12,000 – 16,000 BTU

R410





| Position | FCF Platinum 12k & 16k Spare Parts |  | R410A 115V (60 Hz)   |                      | R410A 230V (50/60 Hz) |                      |
|----------|------------------------------------|--|----------------------|----------------------|-----------------------|----------------------|
|          | Webasto Part #                     | Description                                    | 5011398A<br>12k 115V | 5011400A<br>16k 115V | 5011399A<br>12k 230V  | 5011401A<br>16k 230V |
| 1        | 5012055A                           | High Pressure Switch FCF Platinum R410A        | X                    | X                    | X                     | X                    |
| 2        | 5012030A                           | Reverse Valve Assembly FCF Platinum 12k R410A  | X                    |                      | X                     |                      |
|          | 5012035A                           | Reverse Valve Assembly FCF Platinum 16k R410A  |                      | X                    |                       | X                    |
| 3        | 5012056A                           | Low Pressure Switch FCF Platinum R410A         | X                    | X                    | X                     | X                    |
| 4        | 5012173A                           | Transformer FCF Platinum 115V                  | X                    | X                    |                       |                      |
|          | 5012192A                           | Transformer FCF Platinum 230V                  |                      |                      | X                     | X                    |
| 5        | 5012451A                           | Capacitor 50uF-450V Compressor FCF Platinum    | X                    |                      |                       |                      |
|          | 5012452A                           | Capacitor 35uF-450V Compressor FCF Platinum    |                      |                      | X                     |                      |
|          | FCFSP0075A                         | Capacitor 60uF-450V Compressor FCF Platinum    |                      | X                    |                       | X                    |
| 6        | FCFSP0006A                         | Capacitor 15uF-300V Blower Start FCF Platinum  | X                    | X                    |                       |                      |
|          | FCFSP0063A                         | Capacitor 3.5uF-450V Blower Start FCF Platinum |                      |                      | X                     |                      |
|          | FCFSP0067A                         | Capacitor 4uF-500V Blower Start FCF Platinum   |                      |                      |                       | X                    |
| 7        | FCFSP0059A                         | Terminal Board FCF Platinum                    | X                    | X                    | X                     | X                    |
| 8        | 5012309A                           | AC Contactor FCF Platinum 115V                 | X                    | X                    |                       |                      |
|          | 5012310A                           | AC Contactor FCF Platinum 230V                 |                      |                      | X                     | X                    |
| 9        | 5012315A                           | Capacitor 25uF-450V Blower Run FCF Platinum    | X                    | X                    | X                     | X                    |
| 10       | 5012434A                           | Main Circuit Board FCF Platinum                | X                    | X                    | X                     | X                    |
| 11       | 5012190A                           | 5 Amp 250V Fuse FCF Platinum                   | X                    | X                    | X                     | X                    |
| 12       | 5012301A                           | Electrical Box Cover FCF Platinum 12k & 16k    | X                    | X                    | X                     | X                    |
| 13       | 5012306A                           | Electrical Box Assembly FCF Platinum 12k 115V  | X                    |                      |                       |                      |
|          | 5012307A                           | Electrical Box Assembly FCF Platinum 16k 115V  |                      | X                    |                       |                      |
|          | 5012308A                           | Electrical Box Assembly FCF Platinum 12k 230V  |                      |                      | X                     |                      |
|          | 5012438A                           | Electrical Box Assembly FCF Platinum 16k 230V  |                      |                      |                       | X                    |
| 14       | 5012329                            | Condensate Drain Pipe FCF Platinum             | X                    | X                    | X                     | X                    |
| 15       | FCFSP0058A                         | Clamp Hold Down FCF Platinum                   | X                    | X                    | X                     | X                    |
| 16       | 5012029A                           | Compressor FCF Platinum 12k 115V R410A         | X                    |                      |                       |                      |
|          | 5012034A                           | Compressor FCF Platinum 16k 115V R410A         |                      | X                    |                       |                      |
|          | 5012049A                           | Compressor FCF Platinum 12k 230V R410A         |                      |                      | X                     |                      |
|          | 5012050A                           | Compressor FCF Platinum 16k 230V R410A         |                      |                      |                       | X                    |
| 17       | 5012182A                           | Blower Assembly FCF Platinum 12k 115V          | X                    |                      |                       |                      |
|          | 5012051A                           | Blower Assembly FCF Platinum 16k 115V          |                      | X                    |                       |                      |
|          | 5012044A                           | Blower Assembly FCF Platinum 12k 230V          |                      |                      | X                     |                      |
|          | 5012183A                           | Blower Assembly FCF Platinum 16k 230V          |                      |                      |                       | X                    |
| 18       | FCFSP0017A                         | Duct Ring 5" FCF Platinum                      | X                    | X                    | X                     | X                    |
| 19       | 5012829A                           | Evaporator Wall FCF Platinum 12k               | X                    |                      | X                     |                      |
|          | 5012830A                           | Evaporator Wall FCF Platinum 16k               |                      | X                    |                       | X                    |
| 20       | 5012033A                           | Evaporator Assembly FCF Platinum 12k R410A     | X                    |                      | X                     |                      |
|          | 5012038A                           | Evaporator Assembly FCF Platinum 16k R410A     |                      | X                    |                       | X                    |

|     |            |  |   |   |   |   |
|-----|------------|--|---|---|---|---|
| 21A | FCFSP0098A | Display Cable 8 meters Long FCF Platinum   | X | X | X | X |
| 21B | FCFSP0076A | Display Cable 15 meters Long FCF Platinum  | X | X | X | X |
| 22  | 5012299A   | Digital Display FCF Platinum   | X | X | X | X |
| 23  | 5012610A   | Remote FCF Platinum<br>*Compatible with digital display v-30 or higher. Refer to item 22 | X | X | X | X |
| 24  | 5012455A   | Air Filter FCF Platinum 12k  | X |   | X |   |
|     | 5012456A   | Air Filter FCF Platinum 16k  |   | X |   | X |
| 25  | 5012031A   | Condenser Coil FCF Platinum 12k R410A  | X |   | X |   |
|     | 5012036A   | Condenser Coil FCF Platinum 16k R410A  |   | X |   | X |
| 26  | 5012316A   | Evaporator Temp Sensor FCF Platinum  | X | X | X | X |
| 27  | 5012172A   | Ambient Temp Sensor FCF Platinum   | X | X | X | X |

# Refer to [FCF Platinum Remote Control Quick-Start Guide](#) for more information