

PRODUCT INFORMATION

4111 Cab Parking Heater

Affects: VN
Related: Fuel Tank Package (424)
 Climate Unit (4AX)
 Extra Cab Insulation (58X)
Updated: March 13, 2015

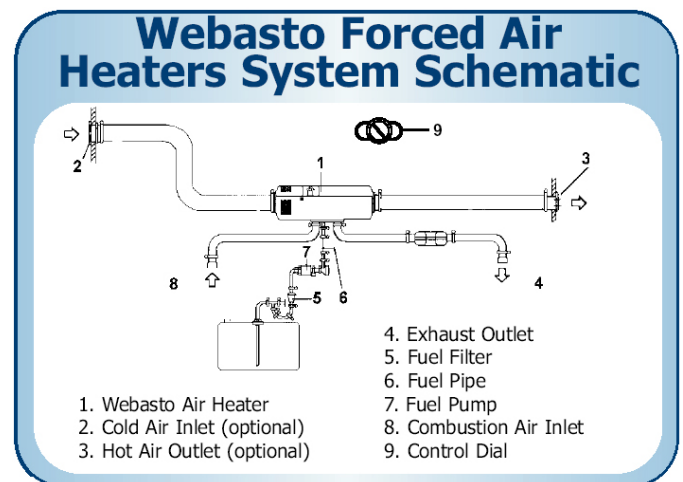
Webasto heaters must be switched “off” when re-fueling at filling stations and/or while loading or unloading flammable materials for transport, to prevent the risk of explosion. Please review owner’s manual for safety and use instructions.

When heater is in use, the surface of the hot air outlet may become hot to the touch. Contact with skin may cause burns.

This lightweight parking heater is compact and quiet, providing “engine off” heat on demand, producing comfortable sleeper heat for up to 20 hours on one gallon of diesel fuel. It is mounted behind the bulkhead in the sleeper storage compartment (driver’s side).

Features:

- Low power and fuel consumption
- Ferro-tech burner, ceramic ignition, and integrated control unit
- Self monitoring with blink code diagnostics
- PC interface diagnostics
- Separate fuel pump with mounting bracket
- [Operating Instructions](#)



Specifications	Min	Max	
Heat			
Rating, Output	3100 BTU/h (0.9 kW)	7000 BTH/h (2.0 kW)	
Hot Air Flow	37 cfm (63 m ³ /h)		
Fuel			
Fuel Type	Diesel #1, #2, Arctic, Biodiesel B5 and B20		
Consumption	0.03 gal/h (0.12 L/h)	0.06 gal/h (0.24 L/h)	
Power			
Rated Voltage	12 Volts		
Consumption @ 12V	1.25 Amps (14 W)	2.45 Amps (29 W)	
Starting	6.25 Amps (75 W)		
Weight	5.73 lbs (2.6 kg)		
Dimensions	Length	Width	Height
	12-1/4 in. (311 mm)	4-23/32 in. (120 mm)	4-3/4 in. (121 mm)



4111 Cab Parking Heater

Updated:

April 27 4, 2012

Recommended Operation of the Webasto Parking Heater

Under extreme cold conditions, there is a risk that continual operation of the parking heater can run down the batteries. If shore power is not available, you may want to consider using the CYCLE mode help operate the parking heater most efficiently.

The following steps show how to set the parking heater in the CYCLE mode. Please note that the settings (for cycle time and thermostat) are initial recommendations; you will have to modify the settings to achieve the level of comfort you want without running the parking heater too much.

Also note that the sleeper control panel has a time delay. If you don't do anything for 7 seconds, the screen will return to the clock and you'll have to start over.

	<ol style="list-style-type: none"> 1. CLOSE THE SLEEPER CURTAIN. This will reduce the area the unit needs to heat. It will run less and save fuel. 2. Press MENU until the sleeper control panel displays HEAT. (You may need to press MENU multiple times.) 3. Press SET. 4. Turn + or - until CYCLE is displayed. 5. Press SET. 6. The display now shows the current heater status (ON or OFF). You can leave it as is, or change it (for example, to turn the heater on now), by pressing ON/OFF. 7. Press SET.
	<ol style="list-style-type: none"> 8. Cycle time HOURS are now flashing. Press SET. 9. Cycle time MINUTES are now flashing. Turn + or - until the display shows 30 minutes. 10. Press SET. 11. The sleeper control panel display returns to the clock, and the HEAT function is illuminated.
	<ol style="list-style-type: none"> 12. Set the thermostat to about the 8 to 9 o'clock position (in the blue) as a starting point. Then, while the parking heater cycles, adjust the thermostat upward to achieve the desired temperature. Note: the thermostat setting should be set lower for the parking heater than for the vehicle's bunk heater. Where you set this will depend on outside temperature, your desired inside temperature, and the cycle time you've selected. Note: the sleeper control panel fan does not control the parking heater fan. The parking heater fan is controlled internally by the parking heater and is based on the thermostat setting.



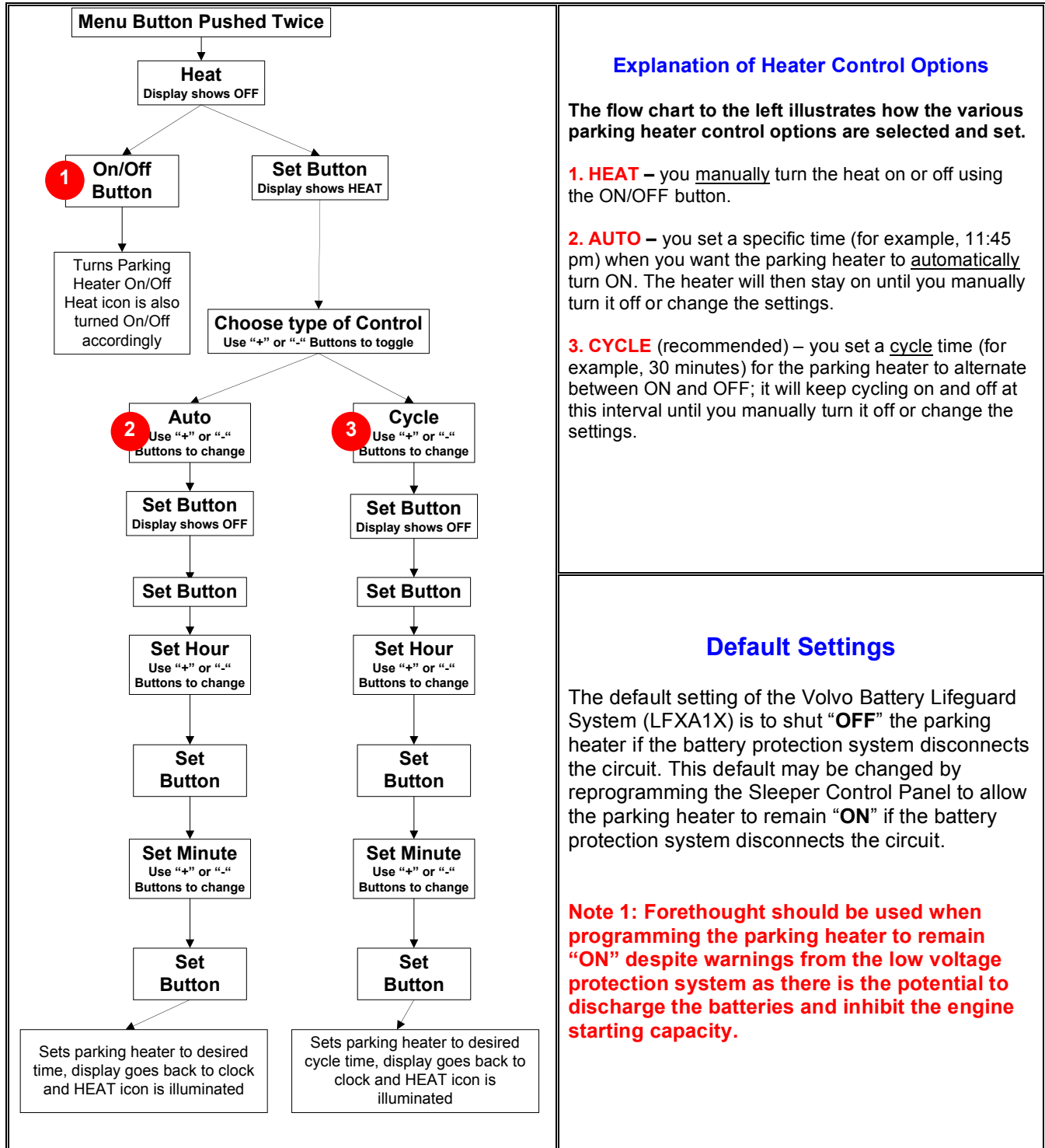
4111

Cab Parking Heater

Updated:

April 27 4, 2012

OTHER PARKING HEATER OPTIONS



Air Top 2000 ST

Air Heater



Save Fuel and Reduce Emissions

Webasto's Air Top 2000 ST heaters provide immediate heat, making interiors more comfortable for drivers while saving fuel from engine-off operation. These compact units are environmentally friendly and reduce harmful emissions.

Air Heater Features:

- Uses as little as 1 Gallon of fuel in a 20 hour period
- CARB approved and EPA SmartWay verified
- Fast Return on Investment
- Quiet operation ensures a restful night's sleep
- Full diagnostics with PC interface available
- High heat output in a compact design
- 7,000 Btu/h output

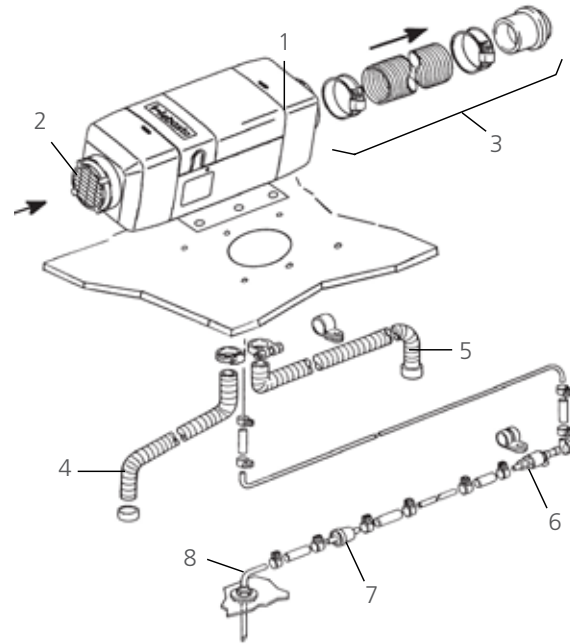
Technical Specifications

	Air Top 2000 ST
Heating capacity electrical	3,100 – 7,000 Btu/h / 0.9 – 2.0 kW
Fuel	Diesel #1, #2 Arctic, Biodiesel B5 & B20
Fuel Consumption	0.03 – 0.06 gal/h / 0.12 – 0.24 l/h
Rated Voltage	12 V
Operating Voltage Range	10.5 – 16 V / X
Rated Input	1.25 – 2.45 Amps / 14 – 29 Watts
Air Flow	37 cfm / 63 m ³ /h
Dimensions (L x W x H)	12.25 x 4.78 x 4.85 in / 311 x 120 x 121 mm
Weight	5.73 lbs / 2.6 kg

Kit Components:

- Integrated Control Unit
- Fuel Metering Pump w/Mounting Bracket
- Fuel Line and Fuel Filter
- Universal Fuel Standpipe
- Heater Mounting Bracket w/Gasket
- Wiring Harness w/Fuse Holder
- Exhaust Tubing
- Combustion Air Tubing and Heater Ducting
- Air Inlet/Outlet Vent
- Operation/Installation Manual
- 2 Year/2000 Hour Limited Warranty

System Schematic



- | | |
|---------------------------|-----------------------|
| 1. Air Top 2000 ST Heater | 5. Exhaust Outlet |
| 2. Cold Air Inlet | 6. Fuel Metering Pump |
| 3. Hot Air Outlet/Ducting | 7. Fuel Filter |
| 4. Combustion Air Inlet | 8. Fuel Standpipe |