

Freightliner Supplement (Plastic Bunk) - AirTop 2000 Heater Installation



Table of Contents

Heater Installation Site	3	Installing Heater Air Ducting	6
Mounting the Air Top 2000 Heater	5	Fuel Line Connections	7



- Improper installation or repair of Webasto heating and cooling systems can cause fire or the leakage of deadly carbon monoxide leading to serious injury or death.
- Installation and repair of Webasto heating and cooling systems requires special Webasto training, technical information, special tools and special equipment.
- NEVER attempt to install or repair Webasto heating or cooling system unless you have successfully completed the factory training course and have the technical skills, technical information, tools and equipment required to properly complete the necessary procedures.
- ALWAYS carefully follow Webasto installation and repair instructions and heed all WARNINGS.
- Webasto rejects any liability for problems and damage caused by the system being installed by untrained personnel.

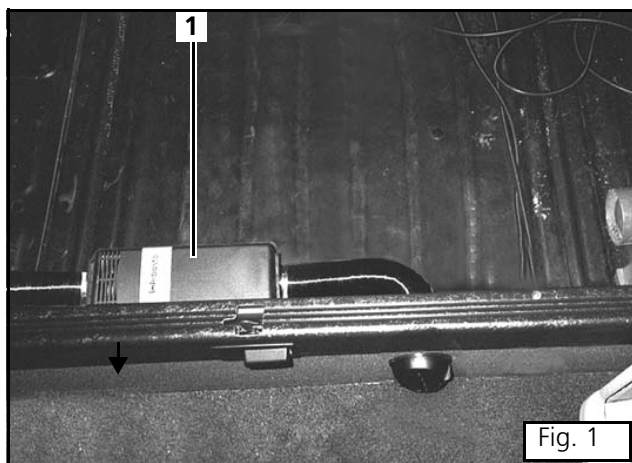
General References

- Bare body parts, for example around drilled holes, must be treated with anti-corrosive coating.
- Secure hoses, cables and wiring harnesses with cable ties and fit protective hoses around them at chafing points.
- Fit edge protectors (opened fuel hose) to sharp edges.

Preparation

Heater Kit

- Verify and identify all contents of kit.



Heater Installation Site

ATTENTION

The Webasto Air Top 2000 Heater is to be installed on the floor in the bunk area of the vehicle.

- (1) Webasto Air Top 2000 Heater



Symbol Identification

Symbols that define sections in manual



Mechanical Preparation

General Symbol Descriptions



Warning



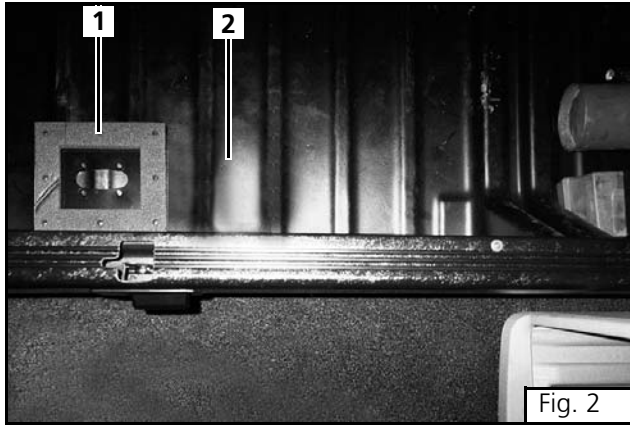
Caution



Flammable or Combustible



Attention

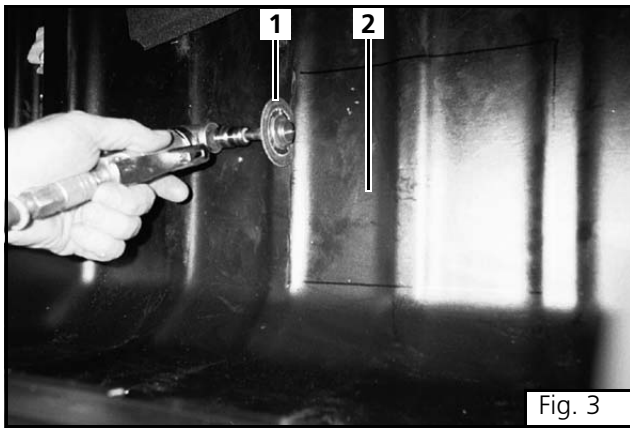


Mounting the Air Top 2000 Heater

ATTENTION

Position the heater mounting bracket on the bunk liner where shown in figure 2. Using the mounting bracket as a template, mark the area of the bunk liner to be removed.

- (1) Heater Mounting Bracket
- (2) Bunk Liner



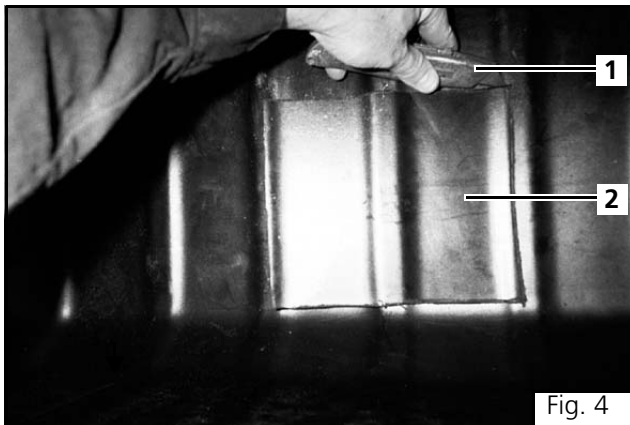
CAUTION

Do **not** cut completely through bunk liner at this time as damage to vehicle body could result.

ATTENTION

Using a cutting wheel or similar tool, cut bunk liner along the lines marked in the previous step.

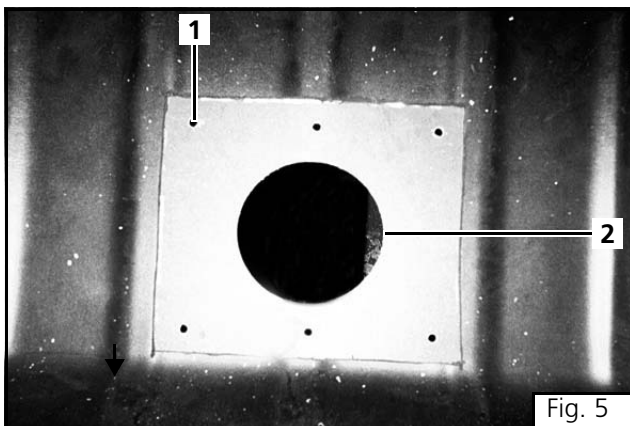
- (1) Cutting Wheel
- (2) Bunk Liner



ATTENTION

To avoid damaging the vehicle body, use a utility knife or similar tool to complete the removal of the bunk liner.

- (1) Utility Knife
- (2) Bunk Liner



CAUTION

Always check for obstructions under vehicle before drilling. Remove obstructions if necessary.

ATTENTION

Using the mounting bracket as a template, mark the holes required to install the heater.

Using a hole saw or similar large hole cutter, cut a 100 mm (4 in.) hole in the center of the mounting bracket outline.

Use a 8 mm (5/16 in.) drill bit to bore holes for securing mounting bracket to vehicle body.

- (1) 8 mm (5/16 in.) holes
- (2) 100 mm (4 in.) hole



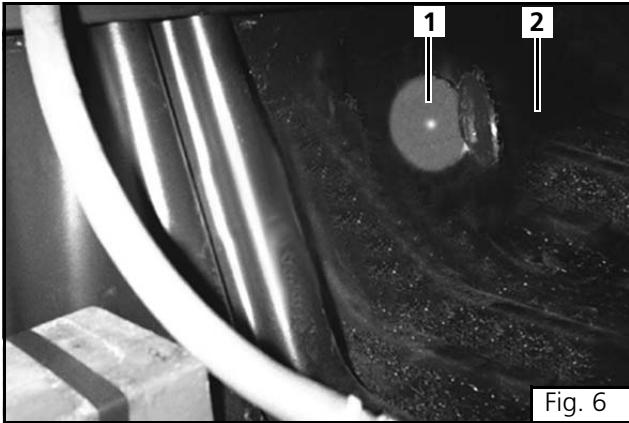


Fig. 6

ATTENTION

Locate the heater outlet vent approximately 254 mm (10 in.) from the heater outlet and centered (top and bottom) in the front wall of the bunk.

Using a hole saw or similar large hole cutter, cut a 100 mm (4 in.) hole through the bunk liner. Do **not** cut through the composite wall at this time.

- (1) Composite Wall
- (2) Bunk Liner

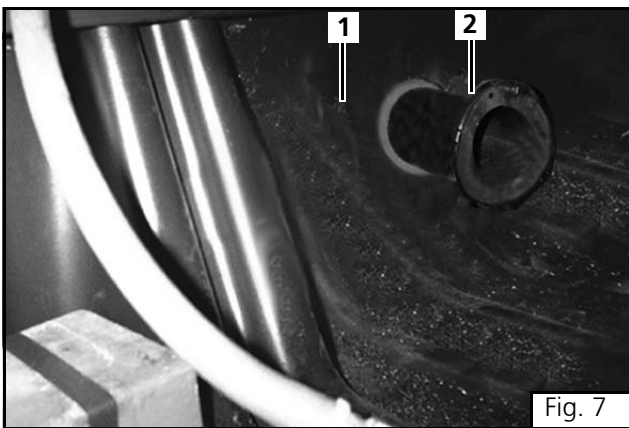


Fig. 7

ATTENTION

Center the warm air nozzle in the 100 mm (4 in.) hole in the bunk liner. Using the warm air nozzle as a template, mark the area of the composite wall to be removed.

- (1) Bunk Liner
- (2) Warm Air Nozzle

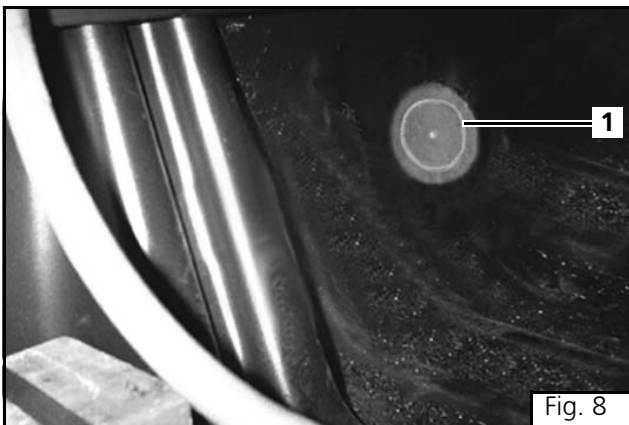


Fig. 8

ATTENTION

Using a utility knife or similar tool, carefully cut through the composite wall where marked.

- (1) Composite Wall

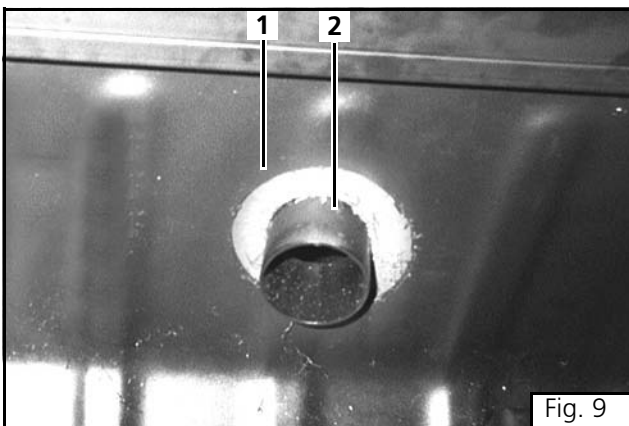


Fig. 9

CAUTION

Ensure the gap between the bunk liner and warm air nozzle is maintained. Failure to follow this caution could result in damage to the bunk liner.

- (1) Bunk Liner
- (2) Warm Air Nozzle



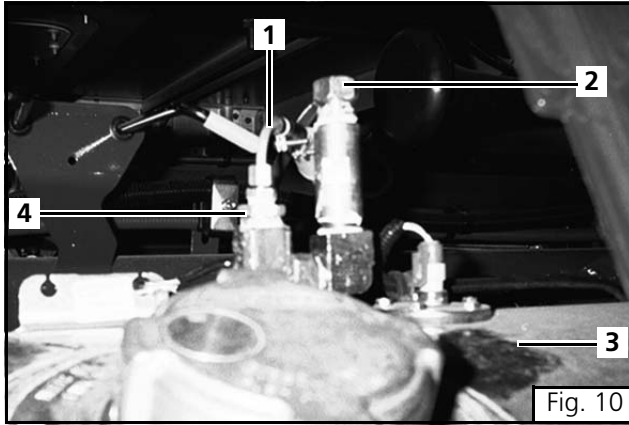


Fig. 10

ATTENTION

Figure 10 shows the location of the heater fuel line and standpipe.

- (1) Heater Fuel Line
- (2) Fuel Tank Vent
- (3) Vehicle Fuel Tank
- (4) Heater Standpipe



Fig. 11

ATTENTION

Install the heater control in the location shown in figure 11.

- (1) Webasto Heater Control





Feel the drive

Webasto Product N.A., Inc.

Technical Assistance Hotline

USA: (800) 555-4518

Canada: (800) 667-8900

www.webasto.us

www.techwebasto.com